



Henrico County

Labor Force Components 2005-2009

Henrico Planning Department
July, 2009

Area	Period	Civilian Labor Force	Employment	Unemployment	Rate
------	--------	----------------------	------------	--------------	------

2009

United States	Jan-09	153,445,000	140,436,000	13,009,000	8.5%
Virginia	Jan-09	4,118,432	3,854,734	263,698	6.4%
Henrico County	Jan-09	163,399	153,629	9,770	6.0%
Richmond City	Jan-09	100,785	91,859	8,926	8.9%
Chesterfield County	Jan-09	166,681	156,744	9,937	6.0%
Goochland County	Jan-09	11,174	10,551	623	5.6%
Hanover County	Jan-09	54,966	51,869	3,097	5.6%

United States	Feb-09	153,804,000	140,105,000	13,699,000	8.9%
Virginia	Feb-09	4,136,590	3,845,489	291,101	7.0%
Henrico County	Feb-09	163,754	152,204	11,550	7.1%
Richmond City	Feb-09	100,844	91,007	9,837	9.8%
Chesterfield County	Feb-09	166,603	155,290	11,313	6.8%
Goochland County	Feb-09	11,151	10,453	698	6.3%
Hanover County	Feb-09	54,993	51,388	3,605	6.6%

United States	Mar-09	153,728,000	139,833,000	13,895,000	9.0%
Virginia	Mar-09	4,142,418	3,853,500	288,918	7.0%
Henrico County	Mar-09	164,216	152,459	11,757	7.2%
Richmond City	Mar-09	100,857	91,160	9,697	9.6%
Chesterfield County	Mar-09	167,145	155,551	11,594	6.9%
Goochland County	Mar-09	11,206	10,470	736	6.6%
Hanover County	Mar-09	55,232	51,474	3,758	6.8%

United States	Apr-09	153,834,000	140,586,000	13,248,000	8.6%
Virginia	Apr-09	4,154,451	3,879,460	274,991	6.6%
Henrico County	Apr-09	164,927	153,113	11,814	7.2%
Richmond City	Apr-09	101,074	91,551	9,523	9.4%
Chesterfield County	Apr-09	167,591	156,218	11,373	6.8%
Goochland County	Apr-09	11,300	10,515	785	6.9%
Hanover County	Apr-09	55,455	51,695	3,760	6.8%

Source: Virginia Employment Commission

Prepared by the Henrico County Planning Department

7/29/2009

*note: These numbers do not reflect any annual adjustments made by VEC in subsequent years.

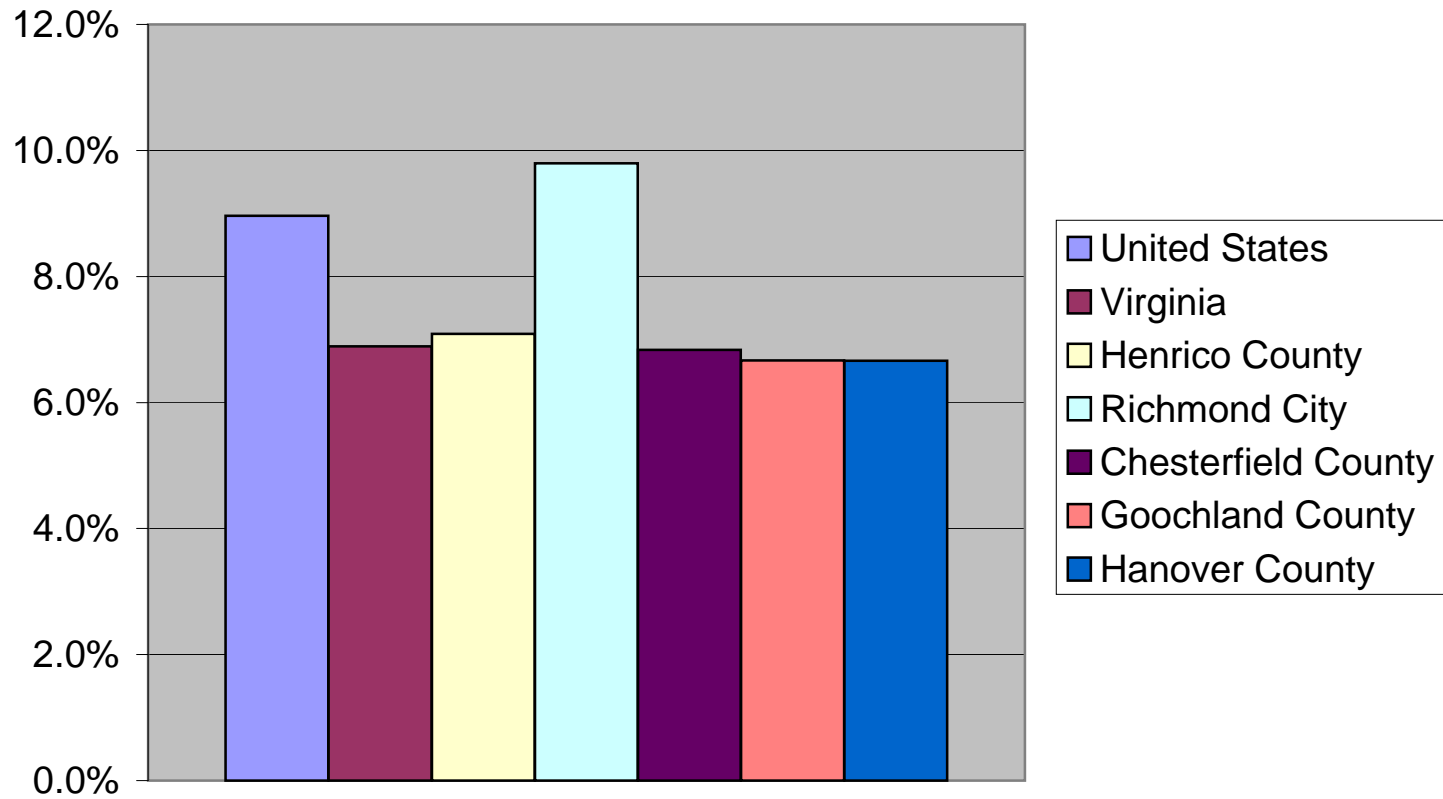
Area	Period	Civilian Labor Force	Employment	Unemployment	Rate
United States	May-09	154,336,000	140,363,000	13,973,000	9.1%
Virginia	May-09	4,175,855	3,882,677	293,178	7.0%
Henrico County	May-09	165,758	153,399	12,359	7.5%
Richmond City	May-09	102,147	91,722	10,425	10.2%
Chesterfield County	May-09	168,534	156,510	12,024	7.1%
Goochland County	May-09	11,353	10,535	818	7.2%
Hanover County	May-09	55,642	51,791	3,851	6.9%

United States	Jun-09	155,921,000	140,826,000	15,095,000	9.7%
Virginia	Jun-09	4,197,151	3,889,009	305,142	7.3%
Henrico County	Jun-09	166,344	153,547	12,797	7.7%
Richmond City	Jun-09	103,031	91,810	11,221	10.9%
Chesterfield County	Jun-09	169,149	156,661	12,488	7.4%
Goochland County	Jun-09	11,392	10,545	847	7.4%
Hanover County	Jun-09	55,903	51,841	4,062	7.3%

Average 2009

United States	2009	154,178,000	140,358,167	13,819,833	9.0%
Virginia	2009	4,154,150	3,867,478	286,171	6.9%
Henrico County	2009	164,733	153,059	11,675	7.1%
Richmond City	2009	101,456	91,518	9,938	9.8%
Chesterfield County	2009	167,617	156,162	11,455	6.8%
Goochland County	2009	11,263	10,512	751	6.7%
Hanover County	2009	55,365	51,676	3,689	6.7%

Average Unemployment Rate: January - June 2009



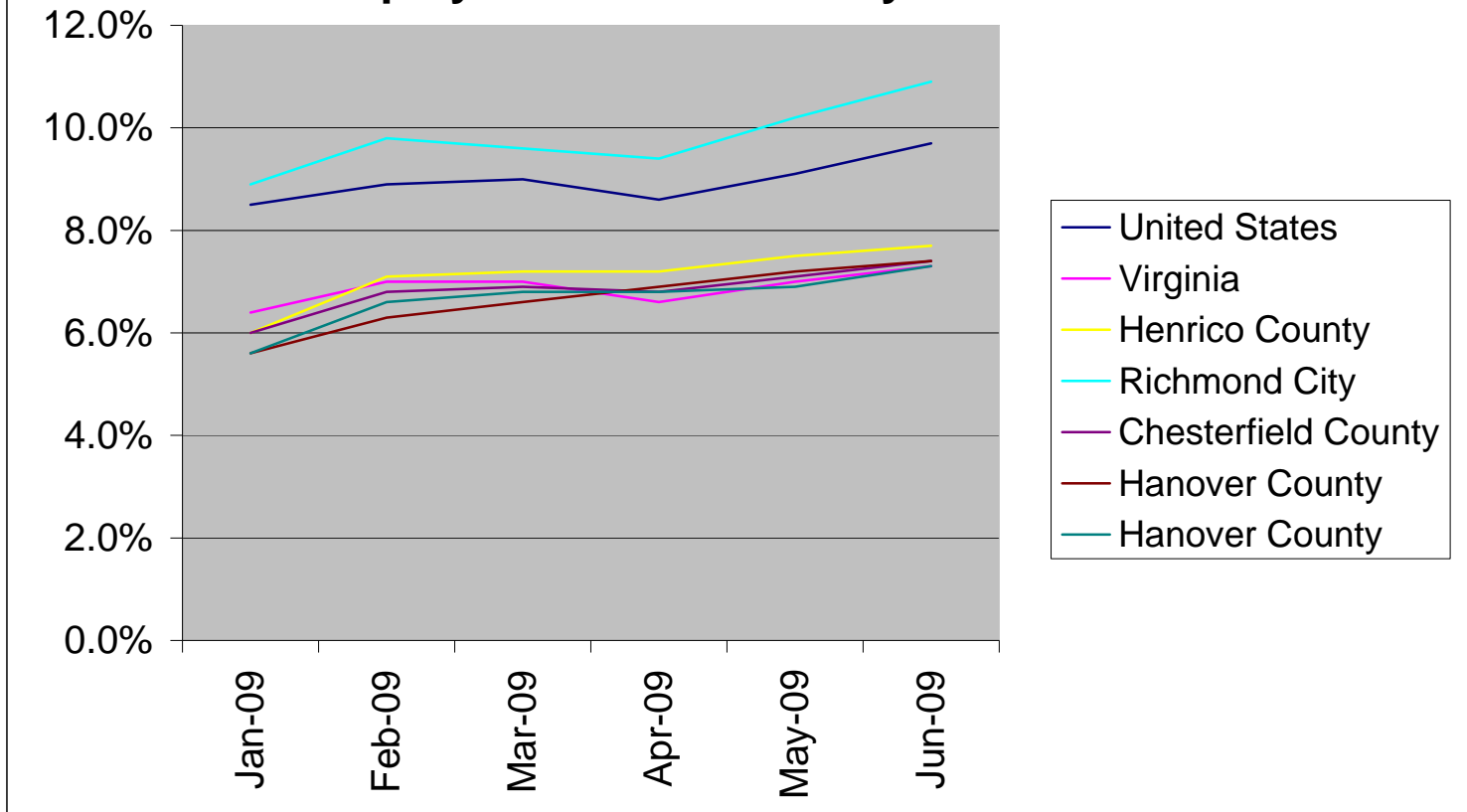
Source: Virginia Employment Commission

Prepared by the Henrico County Planning Department

7/29/2009

*note: These numbers do not reflect any annual adjustments made by VEC in subsequent years.

Unemployment Rate: January - June 2009



Source: Virginia Employment Commission

Prepared by the Henrico County Planning Department

7/29/2009

*note: These numbers do not reflect any annual adjustments made by VEC in subsequent years.

Area	Period	Civilian Labor Force	Employment	Unemployment	Rate
------	--------	----------------------	------------	--------------	------

2008

United States	Jan-08	152,828,000	144,607,000	8,221,000	5.4%
Virginia	Jan-08	4,066,972	3,911,714	155,258	3.8%
Henrico County	Jan-08	163,348	157,744	5,604	3.4%
Richmond City	Jan-08	97,710	92,616	5,094	5.2%
Chesterfield County	Jan-08	168,031	162,410	5,621	3.3%
Goochland County	Jan-08	11,111	10,740	371	3.3%
Hanover County	Jan-08	56,085	54,307	1,778	3.2%

United States	Feb-08	152,503,000	144,550,000	7,953,000	5.2%
Virginia	Feb-08	4,066,250	3,911,341	154,909	3.8%
Henrico County	Feb-08	163,056	157,600	5,456	3.3%
Richmond City	Feb-08	97,849	92,532	5,317	5.4%
Chesterfield County	Feb-08	167,903	162,261	5,642	3.4%
Goochland County	Feb-08	11,094	10,730	364	3.3%
Hanover County	Feb-08	55,936	54,257	1,679	3.0%

United States	Mar-08	153,135,000	145,108,000	8,027,000	5.2%
Virginia	Mar-08	4,107,318	3,948,775	158,543	3.9%
Henrico County	Mar-08	164,818	159,096	5,722	3.5%
Richmond City	Mar-08	98,995	93,410	5,585	5.6%
Chesterfield County	Mar-08	169,626	163,802	5,824	3.4%
Goochland County	Mar-08	11,203	10,832	371	3.3%
Hanover County	Mar-08	56,611	54,772	1,839	3.2%

United States	Apr-08	153,208,000	145,921,000	7,287,000	4.8%
Virginia	Apr-08	4,104,624	3,969,403	135,221	3.3%
Henrico County	Apr-08	164,668	159,677	4,991	3.0%
Richmond City	Apr-08	98,656	93,751	4,905	5.0%
Chesterfield County	Apr-08	169,560	164,400	5,160	3.0%
Goochland County	Apr-08	11,202	10,872	330	2.9%
Hanover County	Apr-08	56,584	54,972	1,612	2.8%

Source: Virginia Employment Commission

Prepared by the Henrico County Planning Department

7/29/2009

*note: These numbers do not reflect any annual adjustments made by VEC in subsequent years.

Area	Period	Civilian Labor Force	Employment	Unemployment	Rate
United States	May-08	154,003,000	145,926,000	8,076,000	5.2%
Virginia	May-08	4,133,337	3,977,293	156,044	3.8%
Henrico County	May-08	165,967	160,200	5,767	3.5%
Richmond City	May-08	99,730	94,058	5,672	5.7%
Chesterfield County	May-08	170,969	164,938	6,031	3.5%
Goochland County	May-08	11,273	10,907	366	3.2%
Hanover County	May-08	56,989	55,152	1,837	3.2%
United States	Jun-08	155,582,000	146,649,000	8,933,000	5.7%
Virginia	Jun-08	4,165,061	3,990,141	174,920	4.2%
Henrico County	Jun-08	166,737	160,276	6,461	3.9%
Richmond City	Jun-08	100,339	94,103	6,236	6.2%
Chesterfield County	Jun-08	171,824	165,017	6,807	4.0%
Goochland County	Jun-08	11,313	10,913	400	3.5%
Hanover County	Jun-08	57,266	55,179	2,087	3.6%
United States	Jul-08	156,300,000	146,867,000	9,433,000	6.0%
Virginia	Jul-08	4,213,918	4,026,524	187,934	4.4%
Henrico County	Jul-08	168,448	161,607	6,841	4.1%
Richmond City	Jul-08	101,557	94,884	6,673	6.6%
Chesterfield County	Jul-08	173,821	166,387	7,434	4.3%
Goochland County	Jul-08	11,413	11,003	410	3.6%
Hanover County	Jul-08	57,932	55,637	2,295	4.0%
United States	Aug-08	155,387,000	145,909,000	9,479,000	6.1%
Virginia	Aug-08	4,169,511	3,976,876	192,635	4.6%
Henrico County	Aug-08	166,500	159,325	7,175	4.3%
Richmond City	Aug-08	100,730	93,544	7,186	7.1%
Chesterfield County	Aug-08	171,567	164,037	7,530	4.4%
Goochland County	Aug-08	11,260	10,848	412	3.7%
Hanover County	Aug-08	57,191	54,851	2,340	4.1%

Source: Virginia Employment Commission

Prepared by the Henrico County Planning Department

7/29/2009

*note: These numbers do not reflect any annual adjustments made by VEC in subsequent years.

Area	Period	Civilian Labor Force	Employment	Unemployment	Rate
United States	Sep-08	154,509,000	145,310,000	9,199,000	6.0%
Virginia	Sep-08	4,130,057	3,956,753	173,304	4.2%
Henrico County	Sep-08	164,337	157,804	6,533	4.0%
Richmond City	Sep-08	99,159	92,652	6,507	6.6%
Chesterfield County	Sep-08	169,217	162,472	6,745	4.0%
Goochland County	Sep-08	11,131	10,744	387	3.5%
Hanover County	Sep-08	56,335	54,328	2,007	3.6%
United States	Oct-08	155,012,000	145,543,000	9,469,000	6.1%
Virginia	Oct-08	4,139,621	3,966,703	172,918	4.2%
Henrico County	Oct-08	165,230	158,752	6,478	3.9%
Richmond City	Oct-08	99,403	93,208	6,195	6.2%
Chesterfield County	Oct-08	170,034	163,447	6,587	3.9%
Goochland County	Oct-08	11,197	10,809	388	3.5%
Hanover County	Oct-08	56,675	54,654	2,021	3.6%
United States	Nov-08	154,624,000	144,609,000	10,015,000	6.5%
Virginia	Nov-08	4,136,407	3,945,560	190,847	4.6%
Henrico County	Nov-08	164,050	156,970	7,080	4.3%
Richmond City	Nov-08	99,067	92,162	6,905	7.0%
Chesterfield County	Nov-08	168,823	161,613	7,210	4.3%
Goochland County	Nov-08	11,115	10,687	428	3.9%
Hanover County	Nov-08	56,347	54,040	2,307	4.1%
United States	Dec-08	154,349,000	143,350,000	10,999,000	7.1%
Virginia	Dec-08	4,131,212	3,917,839	213,373	5.2%
Henrico County	Dec-08	164,440	156,478	7,962	4.8%
Richmond City	Dec-08	99,330	91,873	7,457	7.5%
Chesterfield County	Dec-08	169,141	161,106	8,035	4.8%
Goochland County	Dec-08	11,156	10,654	502	4.5%
Hanover County	Dec-08	56,417	53,871	2,546	4.5%

Source: Virginia Employment Commission

Prepared by the Henrico County Planning Department

7/29/2009

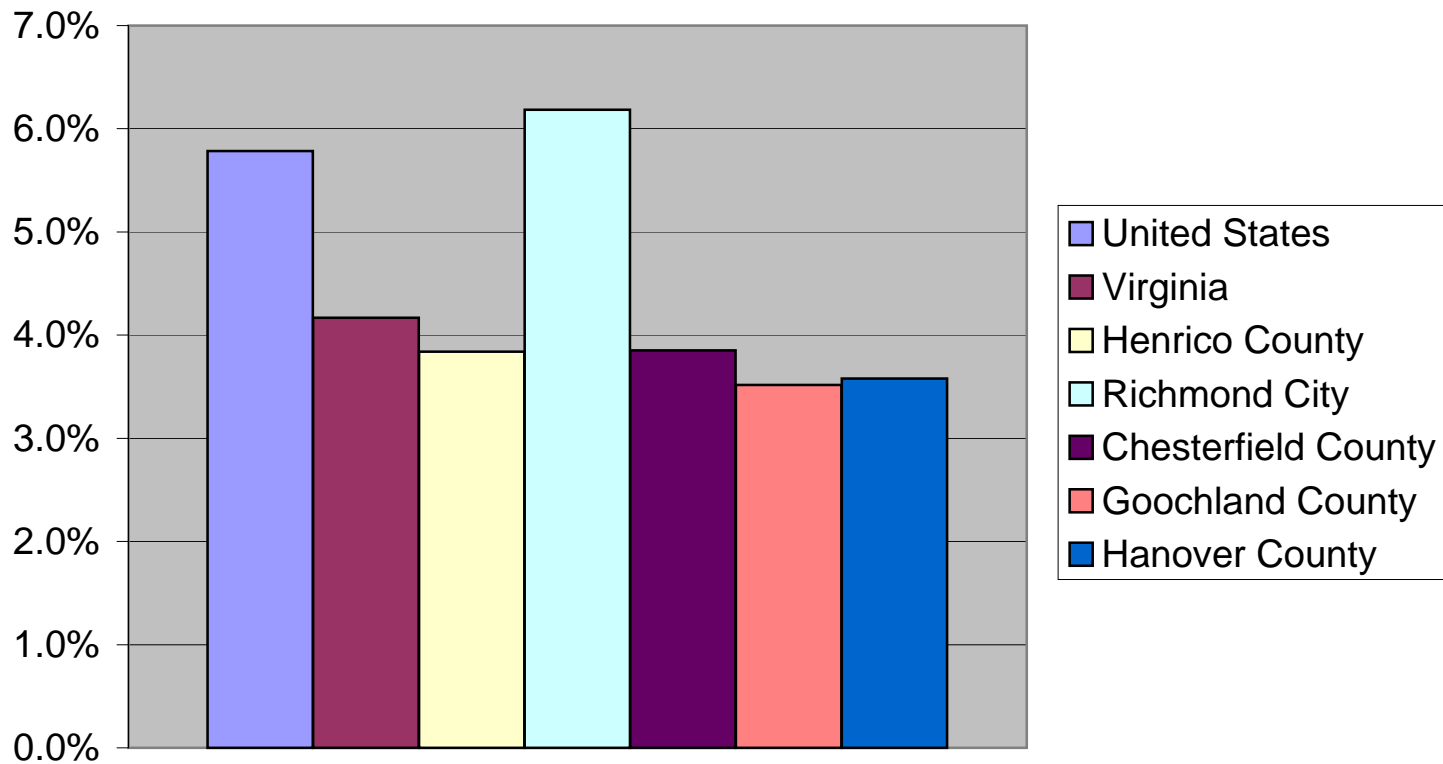
*note: These numbers do not reflect any annual adjustments made by VEC in subsequent years.

Area	Period	Civilian Labor Force	Employment	Unemployment	Rate
------	--------	----------------------	------------	--------------	------

Average 2008

United States	2008	154,286,667	145,362,417	8,924,250	5.8%
Virginia	2008	4,130,357	3,958,244	172,159	4.2%
Henrico County	2008	165,133	158,794	6,339	3.8%
Richmond City	2008	99,377	93,233	6,144	6.2%
Chesterfield County	2008	170,043	163,491	6,552	3.9%
Goochland County	2008	11,206	10,812	394	3.5%
Hanover County	2008	56,697	54,668	2,029	3.6%

Average Unemployment Rate: 2008

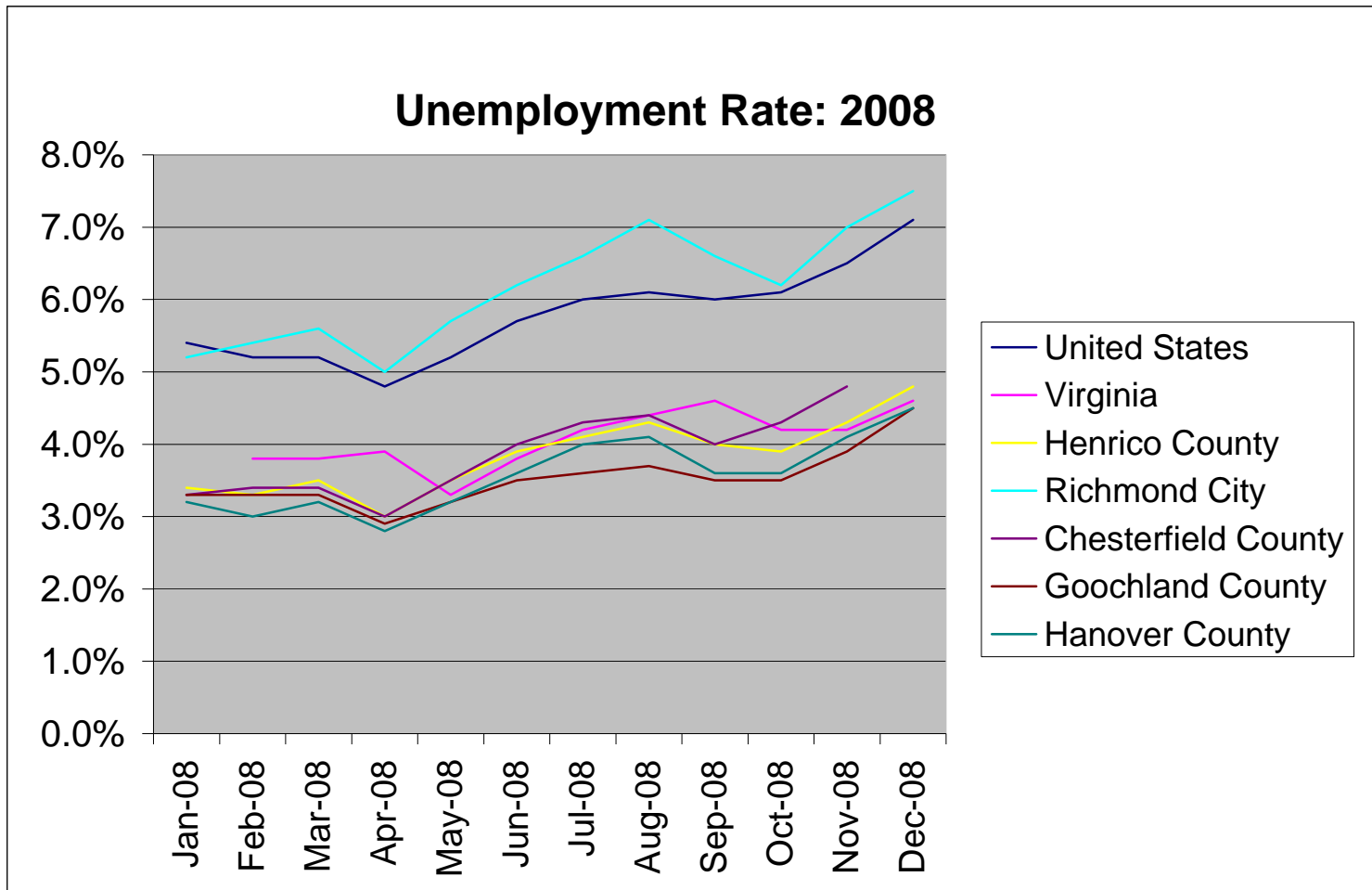


Source: Virginia Employment Commission

Prepared by the Henrico County Planning Department

7/29/2009

*note: These numbers do not reflect any annual adjustments made by VEC in subsequent years.



Source: Virginia Employment Commission

Prepared by the Henrico County Planning Department

7/29/2009

*note: These numbers do not reflect any annual adjustments made by VEC in subsequent years.

Area	Period	Civilian Labor Force	Employment	Unemployment	Rate
------	--------	----------------------	------------	--------------	------

2007

United States	Jan-07	151,924,000	144,275,000	7,649,000	5.0%
Virginia	Jan-07	4,019,945	3,891,537	128,408	3.2%
Henrico County	Jan-07	161,457	156,835	4,622	2.9%
Richmond City	Jan-07	98,248	93,778	4,470	4.5%
Chesterfield County	Jan-07	163,795	159,333	4,462	2.7%
Goochland County	Jan-07	10,666	10,409	257	2.4%
Hanover County	Jan-07	55,235	53,868	1,367	2.5%

United States	Feb-07	151,879,000	144,479,000	7,400,000	4.9%
Virginia	Feb-07	4,022,444	3,892,268	130,176	3.2%
Henrico County	Feb-07	162,250	157,615	4,635	2.9%
Richmond City	Feb-07	98,700	94,245	4,455	4.5%
Chesterfield County	Feb-07	164,445	160,125	4,320	2.6%
Goochland County	Feb-07	10,704	10,460	244	2.3%
Hanover County	Feb-07	55,483	54,136	1,347	2.4%

United States	Mar-07	152,236,000	145,323,000	6,913,000	4.5%
Virginia	Mar-07	4,048,354	3,924,445	123,909	3.1%
Henrico County	Mar-07	163,002	158,562	4,440	2.7%
Richmond City	Mar-07	99,078	94,811	4,267	4.3%
Chesterfield County	Mar-07	165,332	161,087	4,245	2.6%
Goochland County	Mar-07	10,768	10,523	245	2.3%
Hanover County	Mar-07	55,749	54,461	1,288	2.3%

United States	Apr-07	151,829,000	145,297,000	6,532,000	4.3%
Virginia	Apr-07	4,037,880	3,922,701	115,179	2.9%
Henrico County	Apr-07	162,588	158,371	4,217	2.6%
Richmond City	Apr-07	98,622	94,697	3,925	4.0%
Chesterfield County	Apr-07	165,004	160,893	4,111	2.5%
Goochland County	Apr-07	10,735	10,511	224	2.1%
Hanover County	Apr-07	55,663	54,395	1,268	2.3%

Source: Virginia Employment Commission

Prepared by the Henrico County Planning Department

7/29/2009

*note: These numbers do not reflect any annual adjustments made by VEC in subsequent years.

Area	Period	Civilian Labor Force	Employment	Unemployment	Rate
United States	May-07	152,350,000	145,864,000	6,486,000	4.3%
Virginia	May-07	4,056,825	3,942,506	114,319	2.8%
Henrico County	May-07	163,288	159,180	4,108	2.5%
Richmond City	May-07	99,052	95,181	3,871	3.9%
Chesterfield County	May-07	165,682	161,715	3,967	2.4%
Goochland County	May-07	10,787	10,564	223	2.1%
Hanover County	May-07	55,915	54,673	1,242	2.2%
United States	Jun-07	154,252,000	146,958,000	7,295,000	4.7%
Virginia	Jun-07	4,091,676	3,961,928	129,748	3.2%
Henrico County	Jun-07	164,247	159,534	4,713	2.9%
Richmond City	Jun-07	99,861	95,392	4,469	4.5%
Chesterfield County	Jun-07	166,697	162,075	4,622	2.8%
Goochland County	Jun-07	10,861	10,588	273	2.5%
Hanover County	Jun-07	56,329	54,795	1,534	2.7%
United States	Jul-07	154,871,000	147,315,000	7,556,000	4.9%
Virginia	Jul-07	4,115,936	3,989,048	126,888	3.1%
Henrico County	Jul-07	166,204	161,610	4,594	2.8%
Richmond City	Jul-07	101,174	96,634	4,540	4.5%
Chesterfield County	Jul-07	168,760	164,184	4,576	2.7%
Goochland County	Jul-07	10,982	10,726	256	2.3%
Hanover County	Jul-07	56,965	55,508	1,457	2.6%
United States	Aug-07	153,493,000	146,406,000	7,088,000	4.6%
Virginia	Aug-07	4,071,395	3,944,977	126,418	3.1%
Henrico County	Aug-07	163,914	159,296	4,618	2.8%
Richmond City	Aug-07	99,866	95,250	4,616	4.6%
Chesterfield County	Aug-07	166,294	161,833	4,461	2.7%
Goochland County	Aug-07	10,846	10,572	274	2.5%
Hanover County	Aug-07	56,148	54,713	1,435	2.6%

Source: Virginia Employment Commission

Prepared by the Henrico County Planning Department

7/29/2009

*note: These numbers do not reflect any annual adjustments made by VEC in subsequent years.

Area	Period	Civilian Labor Force	Employment	Unemployment	Rate
United States	Sep-07	153,400,000	146,448,000	6,952,000	4.5%
Virginia	Sep-07	4,053,305	3,938,968	114,337	2.8%
Henrico County	Sep-07	162,043	157,761	4,282	2.6%
Richmond City	Sep-07	98,573	94,332	4,241	4.3%
Chesterfield County	Sep-07	164,293	160,274	4,019	2.4%
Goochland County	Sep-07	10,712	10,470	242	2.3%
Hanover County	Sep-07	55,456	54,186	1,270	2.3%
United States	Oct-07	153,516,000	146,743,000	6,773,000	4.4%
Virginia	Oct-07	4,061,019	3,943,636	117,383	2.9%
Henrico County	Oct-07	162,542	158,158	4,384	2.7%
Richmond City	Oct-07	98,705	94,569	4,136	4.2%
Chesterfield County	Oct-07	164,939	160,677	4,262	2.6%
Goochland County	Oct-07	10,756	10,496	260	2.4%
Hanover County	Oct-07	55,674	54,322	1,352	2.4%
United States	Nov-07	154,035,000	147,118,000	6,917,000	4.5%
Virginia	Nov-07	4,075,196	3,953,137	122,059	3.0%
Henrico County	Nov-07	162,091	157,510	4,581	2.8%
Richmond City	Nov-07	98,490	94,182	4,308	4.4%
Chesterfield County	Nov-07	164,453	160,019	4,434	2.7%
Goochland County	Nov-07	10,748	10,454	294	2.7%
Hanover County	Nov-07	55,505	54,100	1,405	2.5%
United States	Dec-07	153,705,000	146,334,000	7,371,000	4.8%
Virginia	Dec-07	4,067,142	3,934,099	133,043	3.3%
Henrico County	Dec-07	161,931	156,989	4,942	3.1%
Richmond City	Dec-07	98,507	93,870	4,637	4.7%
Chesterfield County	Dec-07	164,271	159,489	4,782	2.9%
Goochland County	Dec-07	10,764	10,419	345	3.2%
Hanover County	Dec-07	55,388	53,921	1,467	2.6%

Source: Virginia Employment Commission

Prepared by the Henrico County Planning Department

7/29/2009

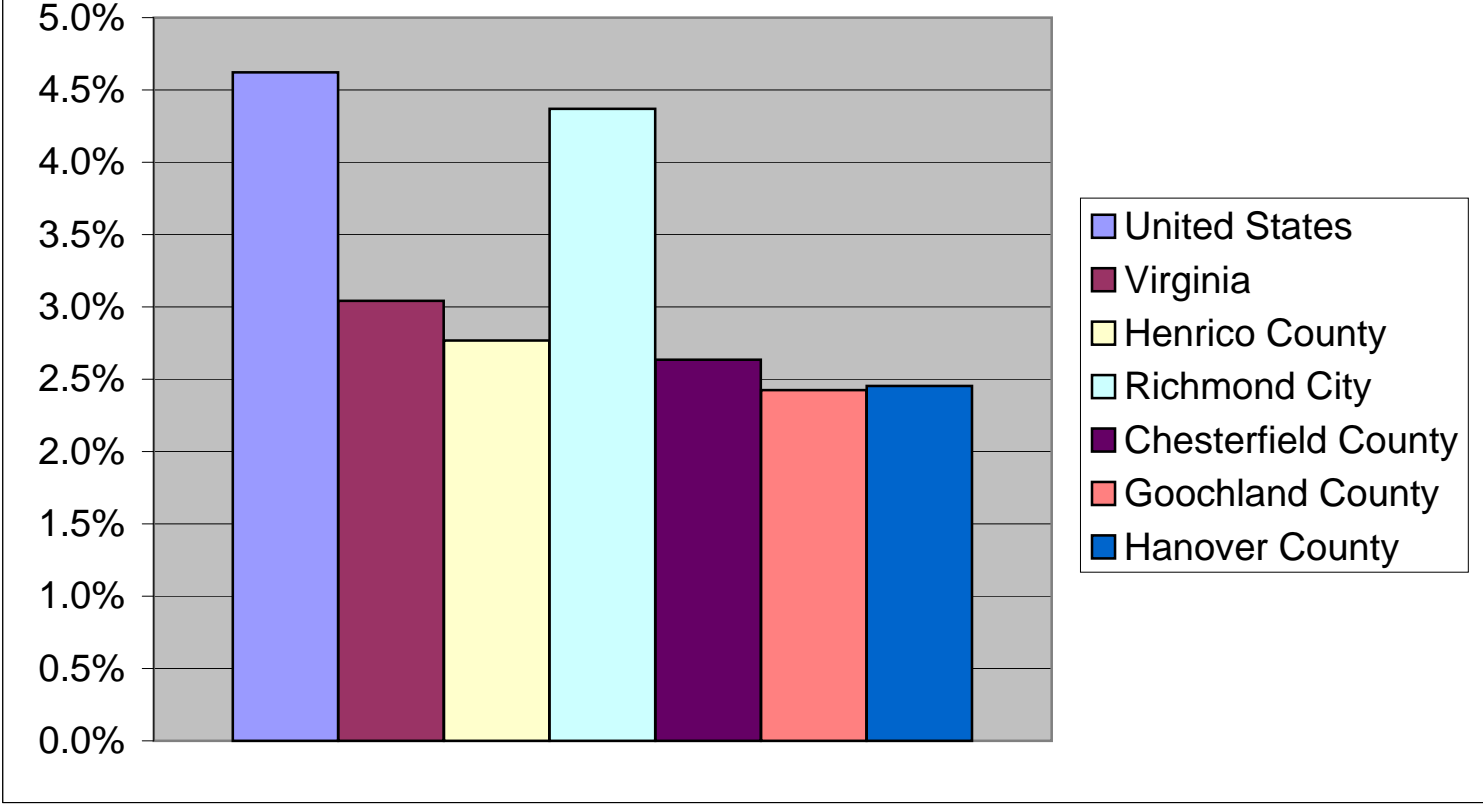
*note: These numbers do not reflect any annual adjustments made by VEC in subsequent years.

Area	Period	Civilian Labor Force	Employment	Unemployment	Rate
------	--------	----------------------	------------	--------------	------

Average 2007

United States	2007	153,124,167	146,046,667	7,077,667	4.6%
Virginia	2007	4,060,093	3,936,604	123,489	3.0%
Henrico County	2007	162,963	158,452	4,511	2.8%
Richmond City	2007	99,073	94,745	4,328	4.4%
Chesterfield County	2007	165,330	160,975	4,355	2.6%
Goochland County	2007	10,777	10,516	261	2.4%
Hanover County	2007	55,793	54,423	1,369	2.5%

Average Unemployment Rate: 2007



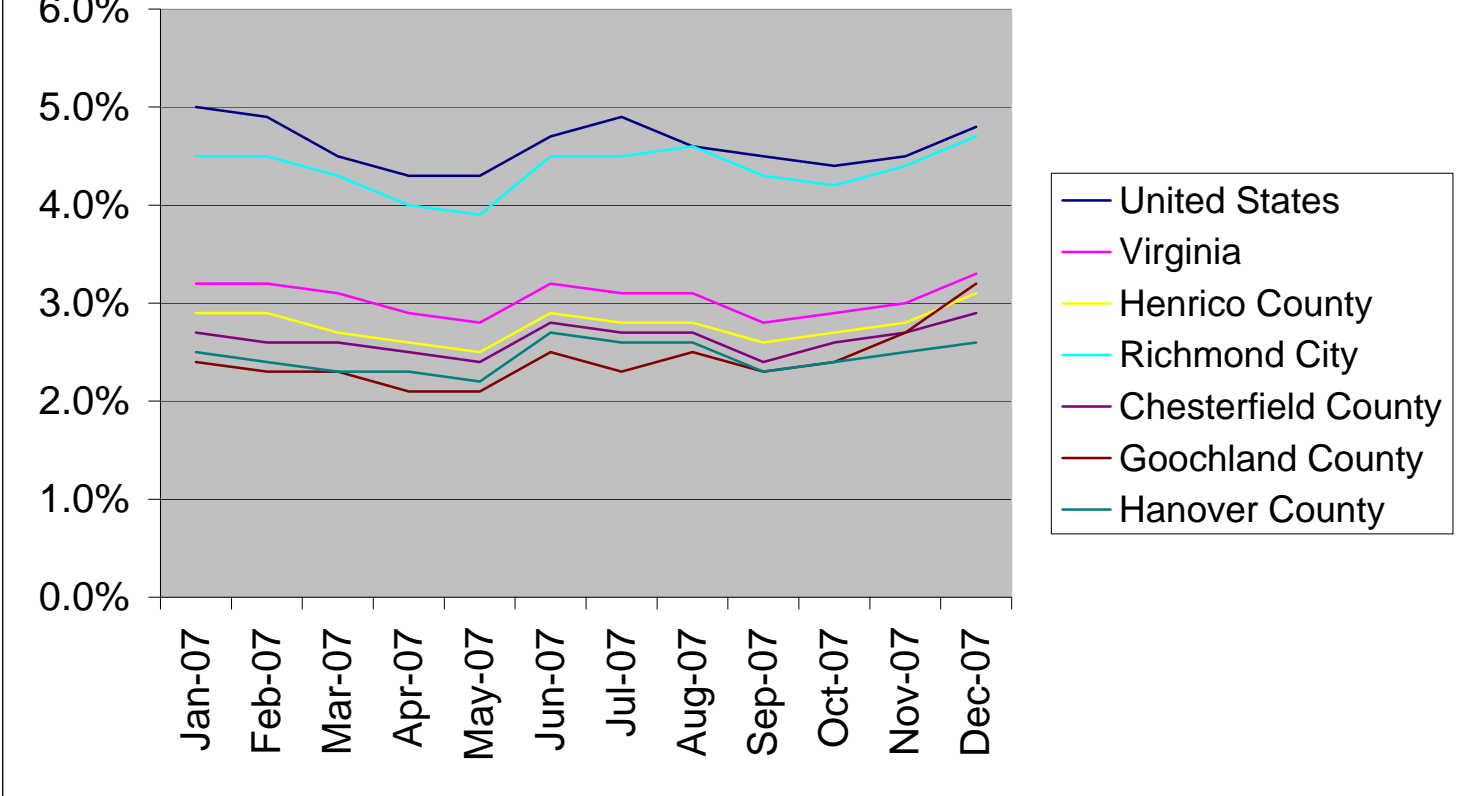
Source: Virginia Employment Commission

Prepared by the Henrico County Planning Department

7/29/2009

*note: These numbers do not reflect any annual adjustments made by VEC in subsequent years.

Unemployment Rate: 2007



Source: Virginia Employment Commission

Prepared by the Henrico County Planning Department

7/29/2009

*note: These numbers do not reflect any annual adjustments made by VEC in subsequent years.

Area	Period	Civilian Labor Force	Employment	Unemployment	Rate
------	--------	----------------------	------------	--------------	------

2006

United States	Jan-06	149,090,000	141,481,000	7,608,000	5.1%
Virginia	Jan-06	3,941,030	3,811,685	129,345	3.3%
Henrico County	Jan-06	159,198	154,457	4,741	3.0%
Richmond City	Jan-06	97,899	93,112	4,787	4.9%
Chesterfield County	Jan-06	160,493	155,962	4,531	2.8%
Goochland County	Jan-06	10,329	10,056	273	2.6%
Hanover County	Jan-06	54,400	53,082	1,318	2.4%

United States	Feb-06	149,686,000	141,994,000	7,692,000	5.1%
Virginia	Feb-06	3,947,636	3,817,400	130,236	3.3%
Henrico County	Feb-06	159,473	154,643	4,830	3.0%
Richmond City	Feb-06	98,108	93,225	4,883	5.0%
Chesterfield County	Feb-06	160,614	156,150	4,464	2.8%
Goochland County	Feb-06	10,335	10,068	267	2.6%
Hanover County	Feb-06	54,404	53,146	1,258	2.3%

United States	Mar-06	150,027,000	142,772,000	7,255,000	4.8%
Virginia	Mar-06	3,976,702	3,850,013	126,689	3.2%
Henrico County	Mar-06	160,187	155,556	4,631	2.9%
Richmond City	Mar-06	98,565	93,775	4,790	4.9%
Chesterfield County	Mar-06	161,558	157,073	4,485	2.8%
Goochland County	Mar-06	10,402	10,127	275	2.6%
Hanover County	Mar-06	54,666	53,460	1,206	2.2%

United States	Apr-06	150,209,000	143,405,000	6,804,000	4.5%
Virginia	Apr-06	3,998,848	3,873,363	125,485	3.1%
Henrico County	Apr-06	161,100	156,380	4,720	2.9%
Richmond City	Apr-06	98,996	94,272	4,724	4.8%
Chesterfield County	Apr-06	162,388	157,904	4,484	2.8%
Goochland County	Apr-06	10,443	10,181	262	2.5%
Hanover County	Apr-06	55,010	53,743	1,267	2.3%

Source: Virginia Employment Commission

Prepared by the Henrico County Planning Department

7/29/2009

*note: These numbers do not reflect any annual adjustments made by VEC in subsequent years.

Area	Period	Civilian Labor Force	Employment	Unemployment	Rate
United States	May-06	150,696,000	144,041,000	6,655,000	4.4%
Virginia	May-06	4,002,784	3,888,279	114,505	2.9%
Henrico County	May-06	161,008	156,650	4,358	2.7%
Richmond City	May-06	98,744	94,434	4,310	4.4%
Chesterfield County	May-06	162,185	158,177	4,008	2.5%
Goochland County	May-06	10,433	10,199	234	2.2%
Hanover County	May-06	55,000	53,836	1,164	2.1%
United States	Jun-06	152,557,000	145,216,000	7,341,000	4.8%
Virginia	Jun-06	4,034,388	3,902,293	132,095	3.3%
Henrico County	Jun-06	161,467	156,584	4,883	3.0%
Richmond City	Jun-06	99,178	94,395	4,783	4.8%
Chesterfield County	Jun-06	162,841	158,111	4,730	2.9%
Goochland County	Jun-06	10,471	10,194	277	2.6%
Hanover County	Jun-06	55,237	53,813	1,424	2.6%
United States	Jul-06	153,208,000	145,606,000	7,602,000	5.0%
Virginia	Jul-06	4,065,647	3,932,885	132,762	3.3%
Henrico County	Jul-06	163,179	158,268	4,911	3.0%
Richmond City	Jul-06	100,302	95,410	4,892	4.9%
Chesterfield County	Jul-06	164,523	159,810	4,713	2.9%
Goochland County	Jul-06	10,570	10,304	266	2.5%
Hanover County	Jul-06	55,859	54,392	1,467	2.6%
United States	Aug-06	152,465,000	145,379,000	7,086,000	4.6%
Virginia	Aug-06	4,030,217	3,900,989	129,228	3.2%
Henrico County	Aug-06	160,991	156,161	4,830	3.0%
Richmond City	Aug-06	99,025	94,140	4,885	4.9%
Chesterfield County	Aug-06	162,278	157,683	4,595	2.8%
Goochland County	Aug-06	10,425	10,167	258	2.5%
Hanover County	Aug-06	55,081	53,668	1,413	2.6%

Source: Virginia Employment Commission

Prepared by the Henrico County Planning Department

7/29/2009

*note: These numbers do not reflect any annual adjustments made by VEC in subsequent years.

Area	Period	Civilian Labor Force	Employment	Unemployment	Rate
United States	Sep-06	151,635,000	145,010,000	6,625,000	4.4%
Virginia	Sep-06	4,011,239	3,885,589	125,650	3.1%
Henrico County	Sep-06	159,051	154,337	4,714	3.0%
Richmond City	Sep-06	97,916	93,040	4,876	5.0%
Chesterfield County	Sep-06	160,276	155,841	4,435	2.8%
Goochland County	Sep-06	10,303	10,048	255	2.5%
Hanover County	Sep-06	54,378	53,041	1,337	2.5%
United States	Oct-06	152,397,000	146,125,000	6,272,000	4.1%
Virginia	Oct-06	4,017,310	3,908,235	109,075	2.7%
Henrico County	Oct-06	160,966	156,980	3,986	2.5%
Richmond City	Oct-06	98,884	94,634	4,250	4.3%
Chesterfield County	Oct-06	162,318	158,510	3,808	2.3%
Goochland County	Oct-06	10,454	10,220	234	2.2%
Hanover County	Oct-06	55,100	53,949	1,151	2.1%
United States	Nov-06	152,590,000	146,014,000	6,576,000	4.3%
Virginia	Nov-06	4,025,282	3,910,654	114,628	2.8%
Henrico County	Nov-06	160,981	156,727	4,254	2.6%
Richmond City	Nov-06	98,931	94,481	4,450	4.5%
Chesterfield County	Nov-06	162,247	158,254	3,993	2.5%
Goochland County	Nov-06	10,420	10,204	216	2.1%
Hanover County	Nov-06	55,059	53,862	1,197	2.2%
United States	Dec-06	152,571,000	146,081,000	6,491,000	4.3%
Virginia	Dec-06	4,022,425	3,914,322	108,103	2.7%
Henrico County	Dec-06	160,827	156,786	4,041	2.5%
Richmond City	Dec-06	98,614	94,517	4,097	4.2%
Chesterfield County	Dec-06	161,952	158,314	3,638	2.2%
Goochland County	Dec-06	10,409	10,207	202	1.9%
Hanover County	Dec-06	54,993	53,883	1,110	2.0%

Source: Virginia Employment Commission

Prepared by the Henrico County Planning Department

7/29/2009

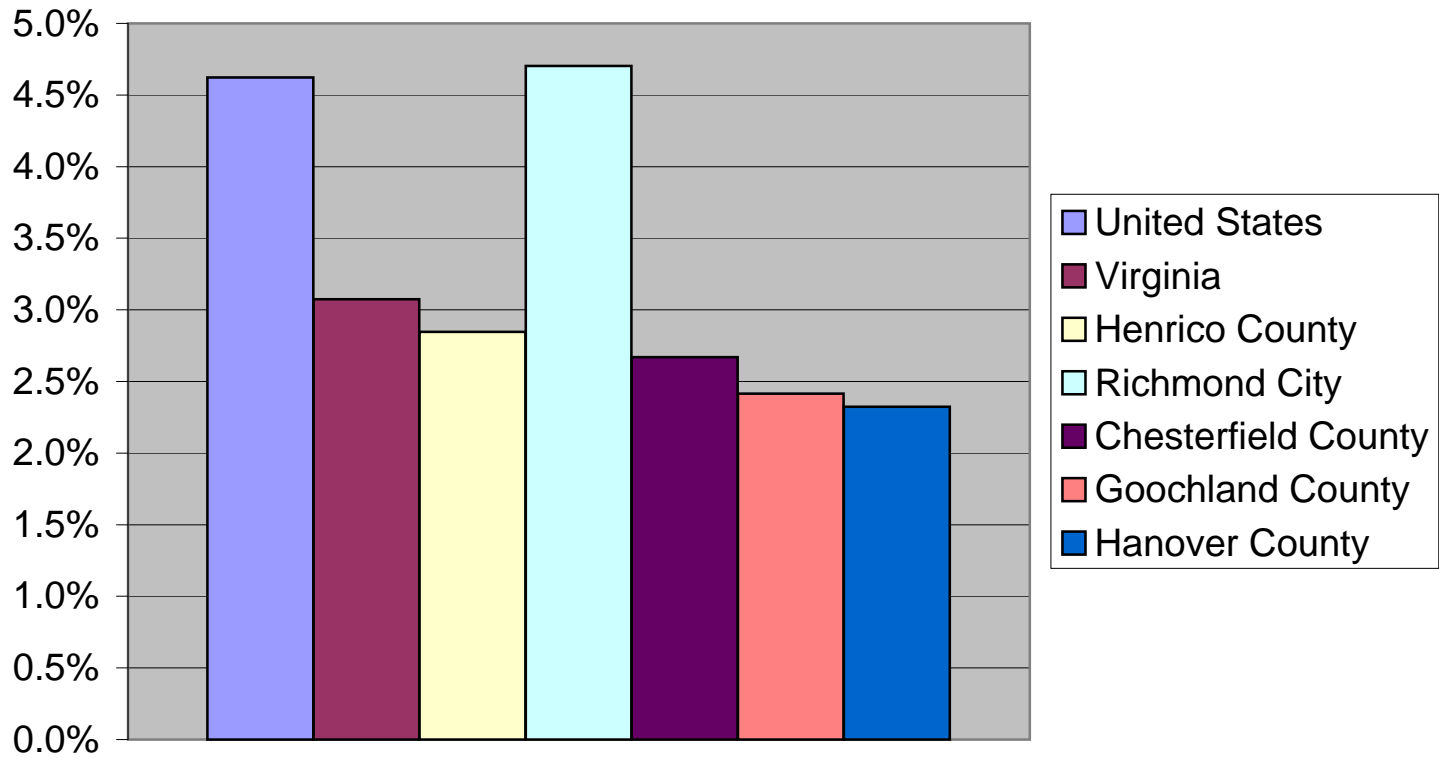
*note: These numbers do not reflect any annual adjustments made by VEC in subsequent years.

Area	Period	Civilian Labor Force	Employment	Unemployment	Rate
------	--------	----------------------	------------	--------------	------

Average 2006

United States	2006	151,427,583	144,427,000	7,000,583	4.6%
Virginia	2006	4,006,126	3,882,976	123,150	3.1%
Henrico County	2006	160,702	156,127	4,575	2.8%
Richmond City	2006	98,764	94,120	4,644	4.7%
Chesterfield County	2006	161,973	157,649	4,324	2.7%
Goochland County	2006	10,416	10,165	252	2.4%
Hanover County	2006	54,932	53,656	1,276	2.3%

Average Unemployment Rate: 2006



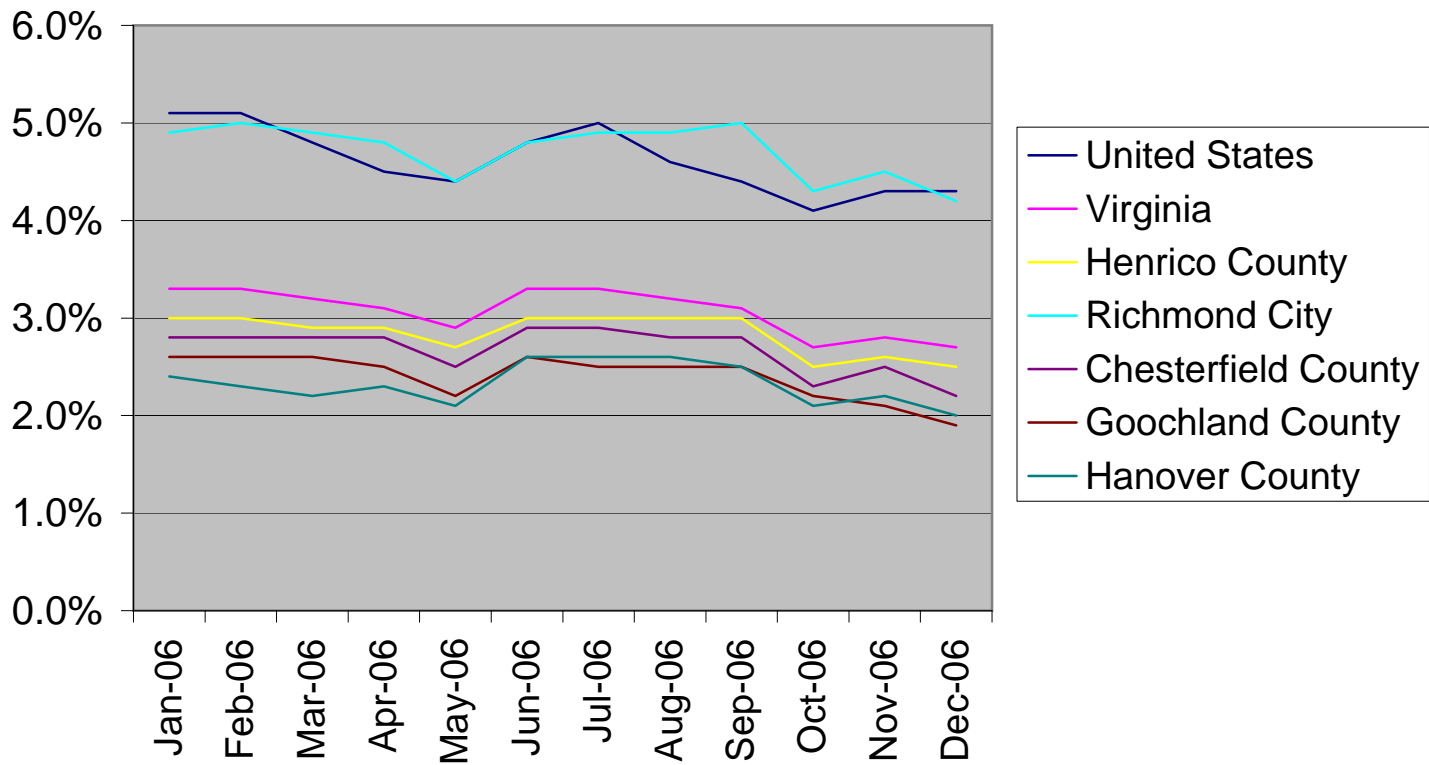
Source: Virginia Employment Commission

Prepared by the Henrico County Planning Department

7/29/2009

*note: These numbers do not reflect any annual adjustments made by VEC in subsequent years.

Unemployment Rate: 2006



Area	Period	Civilian Labor Force	Employment	Unemployment	Rate
------	--------	----------------------	------------	--------------	------

2005

United States	Jan-05	147,125,000	138,682,000	8,444,000	5.7%
Virginia	Jan-05	3,824,066	3,683,600	140,466	3.7%
Henrico County	Jan-05	146,807	141,834	4,973	3.4%
Richmond City	Jan-05	93,509	88,260	5,249	5.6%
Chesterfield County	Jan-05	147,756	142,933	4,823	3.3%
Goochland County	Jan-05	9,371	9,088	283	3.0%
Hanover County	Jan-05	50,104	48,695	1,409	2.8%

United States	Feb-05	147,649,000	139,100,000	8,549,000	5.8%
Virginia	Feb-05	3,834,740	3,697,639	137,101	3.6%
Henrico County	Feb-05	150,350	145,290	5,060	3.4%
Richmond City	Feb-05	95,570	90,411	5,159	5.4%
Chesterfield County	Feb-05	151,017	146,415	4,602	3.0%
Goochland County	Feb-05	9,601	9,310	291	3.0%
Hanover County	Feb-05	51,260	49,881	1,379	2.7%

United States	Mar-05	147,745,000	139,759,000	7,986,000	5.4%
Virginia	Mar-05	3,852,864	3,721,291	131,573	3.4%
Henrico County	Mar-05	151,096	146,355	4,741	3.1%
Richmond City	Mar-05	96,018	91,074	4,944	5.1%
Chesterfield County	Mar-05	151,927	147,489	4,438	2.9%
Goochland County	Mar-05	9,668	9,378	290	3.0%
Hanover County	Mar-05	51,574	50,247	1,327	2.6%

United States	Apr-05	148,274,000	140,939,000	7,335,000	4.9%
Virginia	Apr-05	3,882,439	3,751,904	130,535	3.4%
Henrico County	Apr-05	152,457	147,567	4,890	3.2%
Richmond City	Apr-05	96,677	91,828	4,849	5.0%
Chesterfield County	Apr-05	153,182	148,710	4,472	2.9%
Goochland County	Apr-05	9,747	9,456	291	3.0%
Hanover County	Apr-05	52,049	50,663	1,386	2.7%

Source: Virginia Employment Commission

Prepared by the Henrico County Planning Department

7/29/2009

*note: These numbers do not reflect any annual adjustments made by VEC in subsequent years.

Area	Period	Civilian Labor Force	Employment	Unemployment	Rate
United States	May-05	148,878,000	141,591,000	7,287,000	4.9%
Virginia	May-05	3,917,204	3,777,543	139,661	3.6%
Henrico County	May-05	157,482	152,134	5,348	3.4%
Richmond City	May-05	99,849	94,670	5,179	5.2%
Chesterfield County	May-05	158,110	153,313	4,797	3.0%
Goochland County	May-05	10,052	9,748	304	3.0%
Hanover County	May-05	53,708	52,231	1,477	2.8%
United States	Jun-05	150,327,000	142,456,000	7,870,000	5.2%
Virginia	Jun-05	3,953,595	3,803,156	150,439	3.8%
Henrico County	Jun-05	158,893	153,100	5,793	3.6%
Richmond City	Jun-05	100,904	95,271	5,633	5.6%
Chesterfield County	Jun-05	159,491	154,286	5,205	3.3%
Goochland County	Jun-05	10,136	9,810	326	3.2%
Hanover County	Jun-05	54,205	52,563	1,642	3.0%
United States	Jul-05	148,878,000	141,591,000	7,287,000	4.9%
Virginia	Jul-05	3,917,204	3,777,543	139,661	3.6%
Henrico County	Jul-05	157,482	152,134	5,348	3.4%
Richmond City	Jul-05	99,849	94,670	5,179	5.2%
Chesterfield County	Jul-05	158,110	153,313	4,797	3.0%
Goochland County	Jul-05	10,052	9,748	304	3.0%
Hanover County	Jul-05	53,708	52,231	1,477	2.8%
United States	Aug-05	150,469,000	143,142,000	7,327,000	4.9%
Virginia	Aug-05	3,963,733	3,816,942	146,791	3.7%
Henrico County	Aug-05	158,488	152,745	5,743	3.6%
Richmond City	Aug-05	100,720	95,050	5,670	5.6%
Chesterfield County	Aug-05	159,049	153,928	5,121	3.2%
Goochland County	Aug-05	10,110	9,788	322	3.2%
Hanover County	Aug-05	54,092	52,441	1,651	3.1%

Source: Virginia Employment Commission

Prepared by the Henrico County Planning Department

7/29/2009

*note: These numbers do not reflect any annual adjustments made by VEC in subsequent years.

Area	Period	Civilian Labor Force	Employment	Unemployment	Rate
United States	Sep-05	149,838,000	142,579,000	7,259,000	4.8%
Virginia	Sep-05	3,942,791	3,804,900	137,891	3.5%
Henrico County	Sep-05	158,267	152,722	5,545	3.5%
Richmond City	Sep-05	100,417	95,035	5,382	5.4%
Chesterfield County	Sep-05	158,682	153,905	4,777	3.0%
Goochland County	Sep-05	10,101	9,786	315	3.1%
Hanover County	Sep-05	53,952	52,433	1,519	2.8%
United States	Oct-05	150,304,000	143,340,000	6,964,000	4.6%
Virginia	Oct-05	3,952,413	3,824,736	127,677	3.2%
Henrico County	Oct-05	159,008	153,839	5,169	3.3%
Richmond City	Oct-05	100,824	95,731	5,093	5.1%
Chesterfield County	Oct-05	159,569	155,031	4,538	2.8%
Goochland County	Oct-05	10,112	9,858	254	2.5%
Hanover County	Oct-05	54,218	52,817	1,401	2.6%
United States	Nov-05	150,239,000	142,968,000	7,271,000	4.8%
Virginia	Nov-05	3,952,904	3,821,723	131,181	3.3%
Henrico County	Nov-05	158,686	153,617	5,069	3.2%
Richmond City	Nov-05	100,722	95,593	5,129	5.1%
Chesterfield County	Nov-05	159,458	154,807	4,651	2.9%
Goochland County	Nov-05	10,115	9,843	272	2.7%
Hanover County	Nov-05	54,147	52,741	1,406	2.6%
United States	Dec-05	149,874,000	142,918,000	6,956,000	4.6%
Virginia	Dec-05	3,932,400	3,812,466	119,934	3.0%
Henrico County	Dec-05	157,855	153,308	4,547	2.9%
Richmond City	Dec-05	100,044	95,400	4,644	4.6%
Chesterfield County	Dec-05	158,688	154,496	4,192	2.6%
Goochland County	Dec-05	10,088	9,824	264	2.6%
Hanover County	Dec-05	53,899	52,634	1,265	2.3%

Source: Virginia Employment Commission

Prepared by the Henrico County Planning Department

7/29/2009

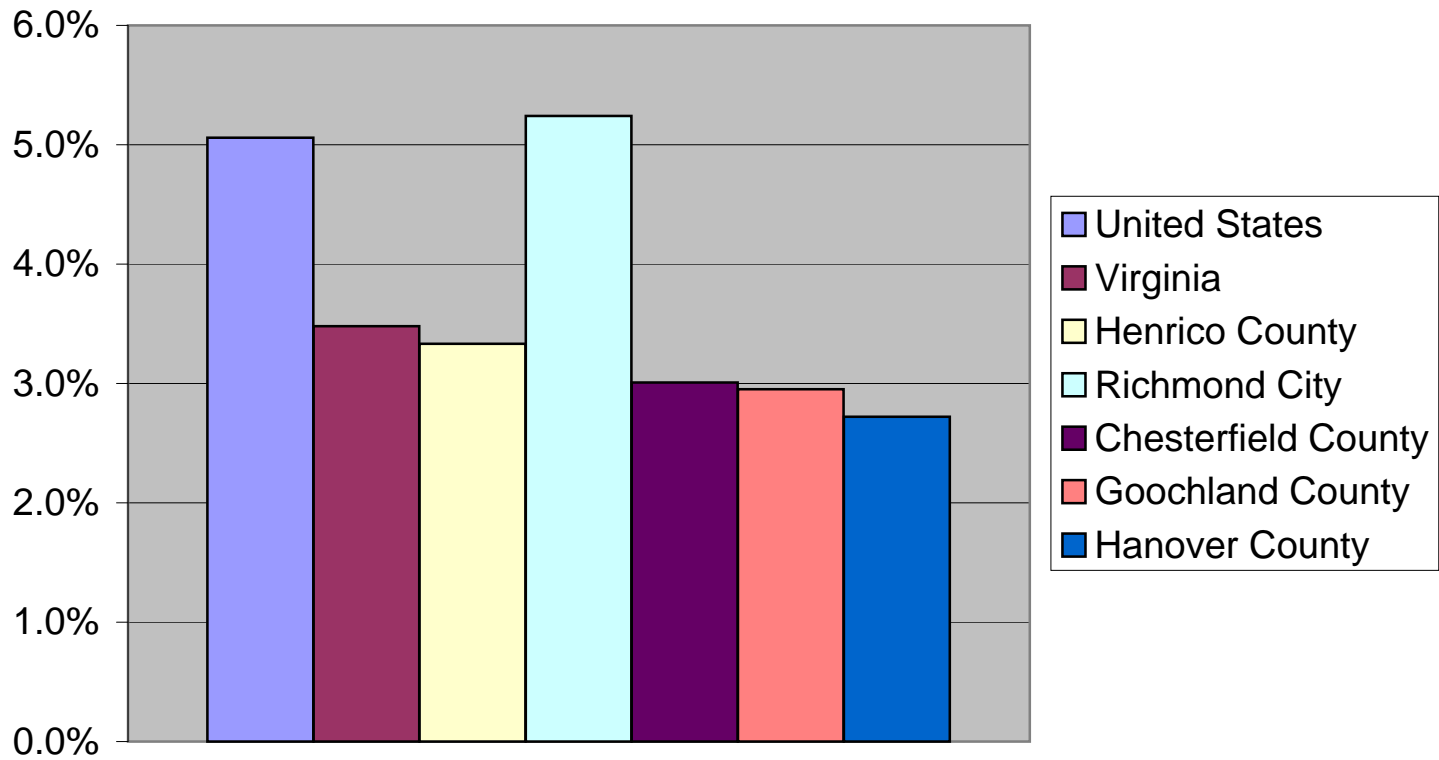
*note: These numbers do not reflect any annual adjustments made by VEC in subsequent years.

Area	Period	Civilian Labor Force	Employment	Unemployment	Rate
------	--------	----------------------	------------	--------------	------

Average 2005

United States	2005	149,133,333	141,588,750	7,544,583	5.1%
Virginia	2005	3,910,529	3,774,454	136,076	3.5%
Henrico County	2005	155,573	150,387	5,186	3.3%
Richmond City	2005	98,759	93,583	5,176	5.2%
Chesterfield County	2005	156,253	151,552	4,701	3.0%
Goochland County	2005	9,929	9,636	293	3.0%
Hanover County	2005	53,076	51,631	1,445	2.7%

Average Unemployment Rate: 2005



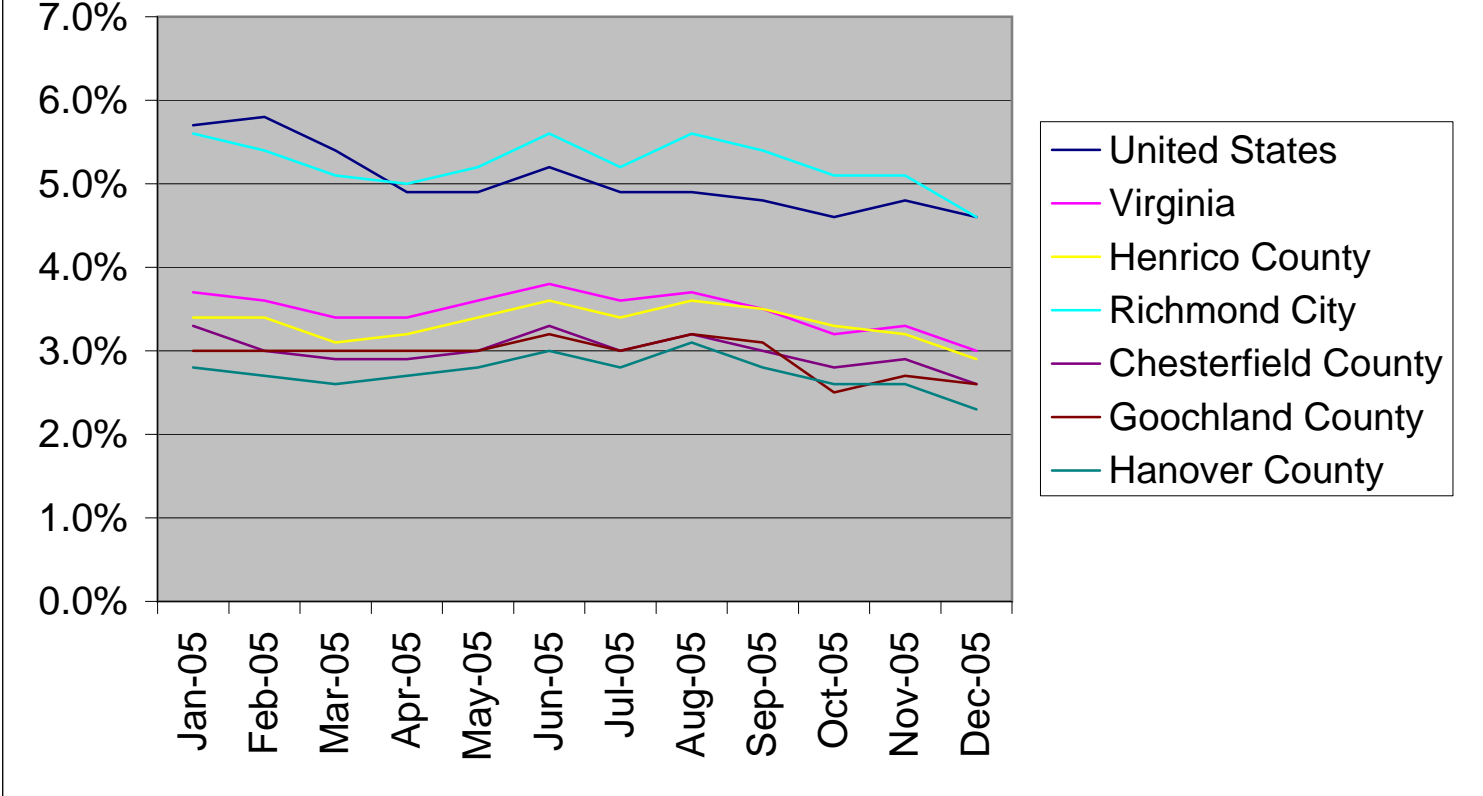
Source: Virginia Employment Commission

Prepared by the Henrico County Planning Department

7/29/2009

*note: These numbers do not reflect any annual adjustments made by VEC in subsequent years.

Unemployment Rate: 2005



Source: Virginia Employment Commission

Prepared by the Henrico County Planning Department

7/29/2009

*note: These numbers do not reflect any annual adjustments made by VEC in subsequent years.

Average Unemployment Rate: 2005 - June 2009

